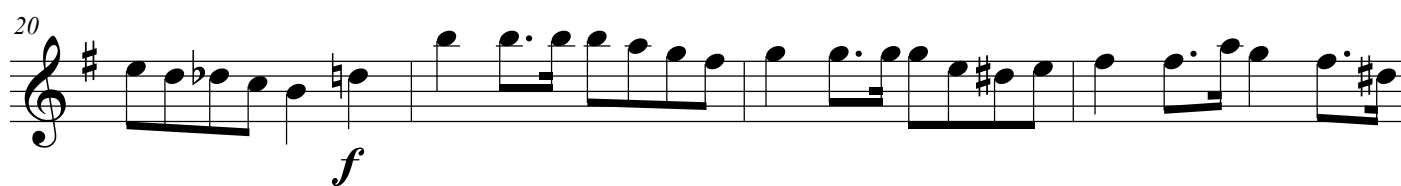
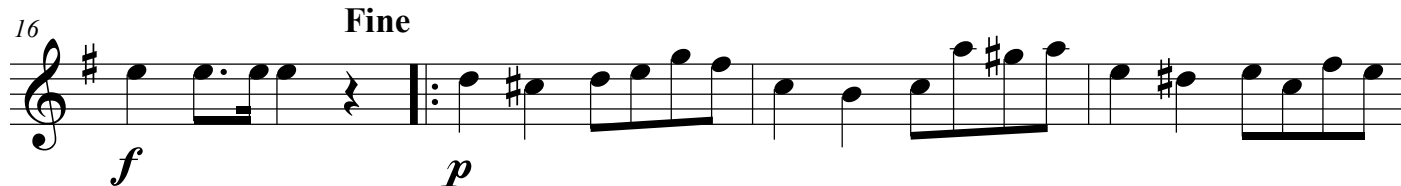
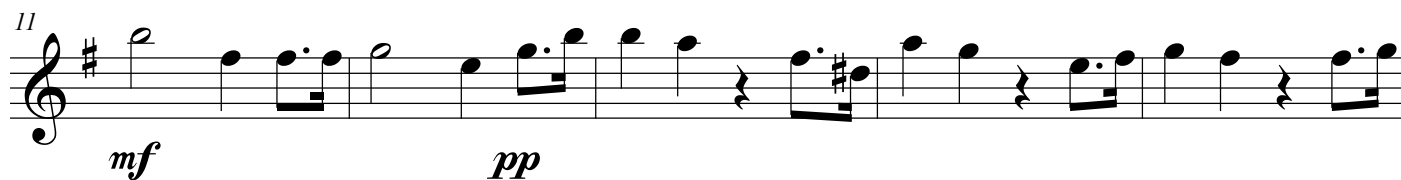
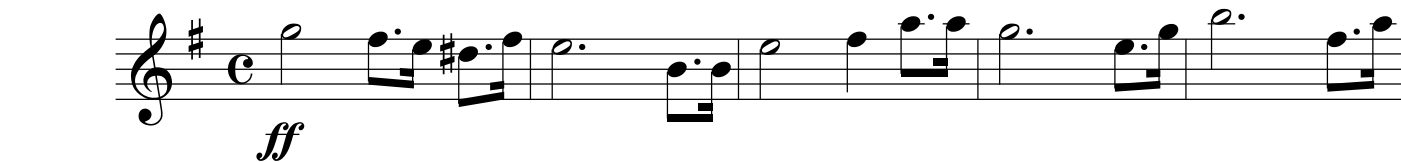


Senhor dos Passos

Marcha Fúnebre

Pedro de Alchantra Veloso

Lento



D.C. al Fine

Clarinet in B \flat 1

Senhor dos Passos

Marcha Fúnebre

Pedro de Alchantra Veloso

Lento

11

mf *pp* *f*

Fine

21 

25

f

29 D.C. al Fine

The musical notation for measure 29 is written on a single staff with a treble clef. The key signature has one flat (B-flat). The measure begins with a half note G4. This is followed by a quarter rest, then a quarter note A4 with a sharp sign (F#4). Next is a half note G4, followed by a quarter note F4. The sequence continues with a quarter note E4, a quarter note D4, a quarter note C4, and a quarter note B3. This is followed by a quarter note A3, a quarter note G3, and a quarter note F3. The measure concludes with a quarter note E3, a quarter note D3, and a quarter note C3, followed by a repeat sign (double bar line with two dots).

Clarinet in B \flat 2

Senhor dos Passos

Marcha Fúnebre

Pedro de Alchantra Veloso

Lento

ff

6 *mf*

12 *pp* *f* Fine

17 *p* *f*

21

25 *p* *f*

29 D.C. al Fine

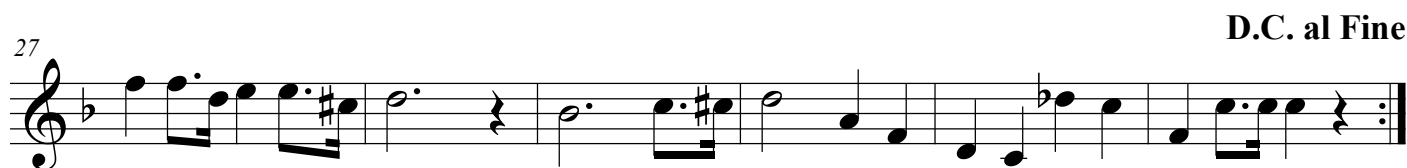
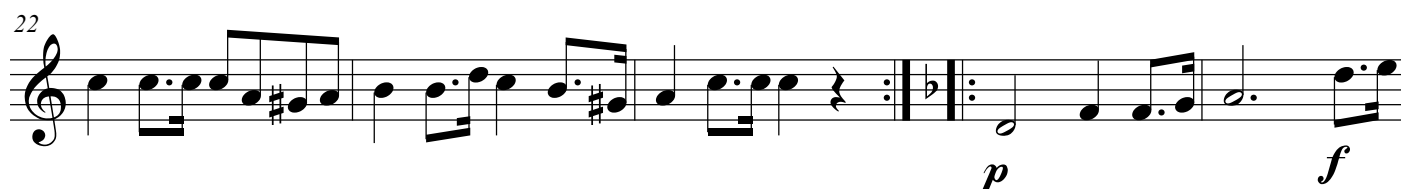
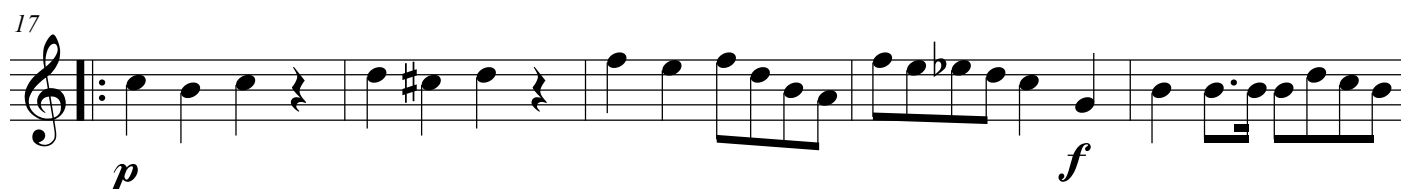
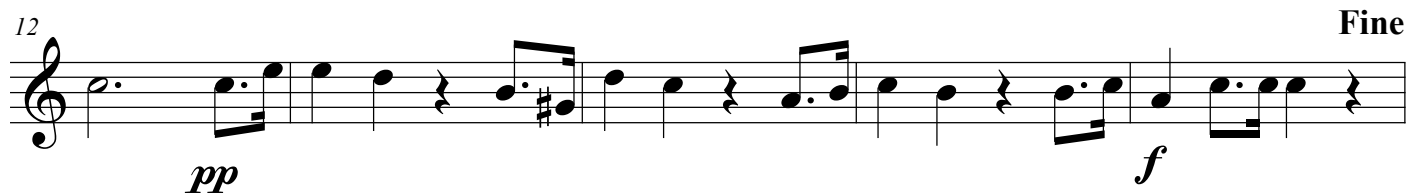
Trumpet in B \flat 1

Senhor dos Passos

Marcha Fúnebre

Pedro de Alchantra Veloso

Lento



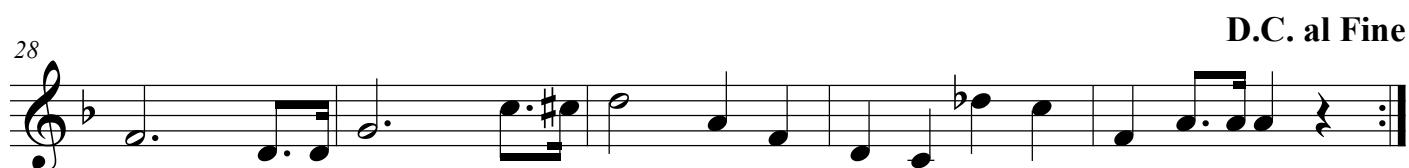
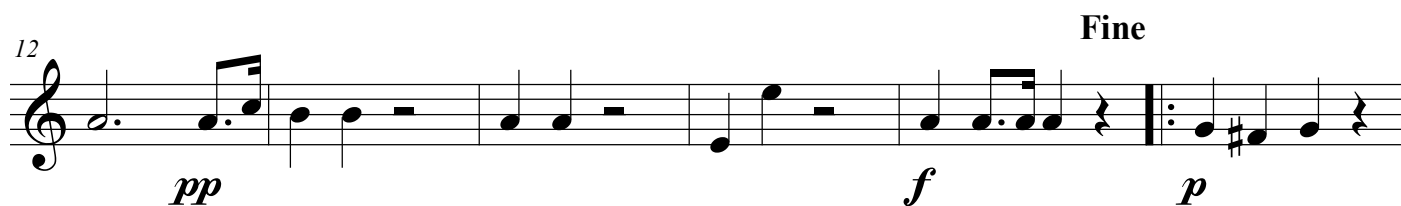
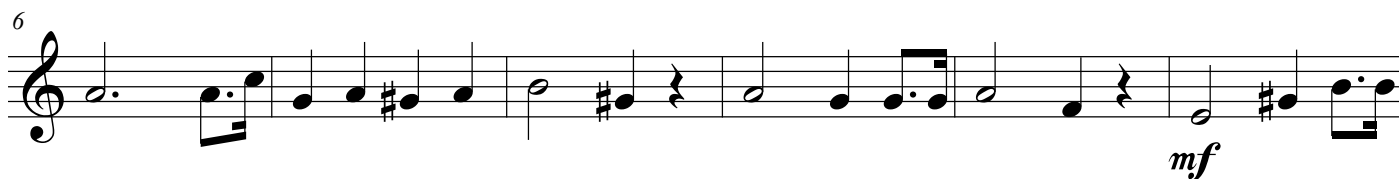
Trumpet in B \flat 2

Senhor dos Passos

Marcha Fúnebre

Pedro de Alchantra Veloso

Lento



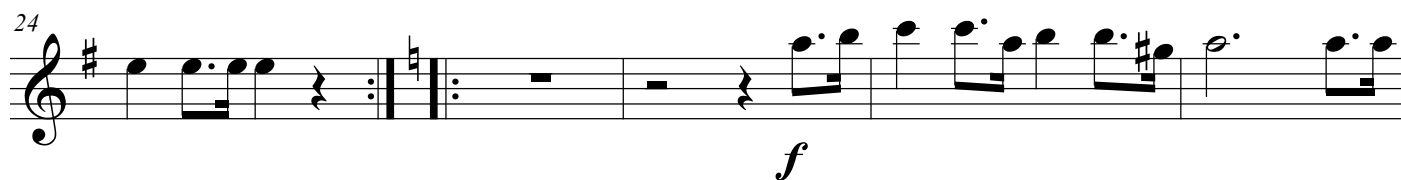
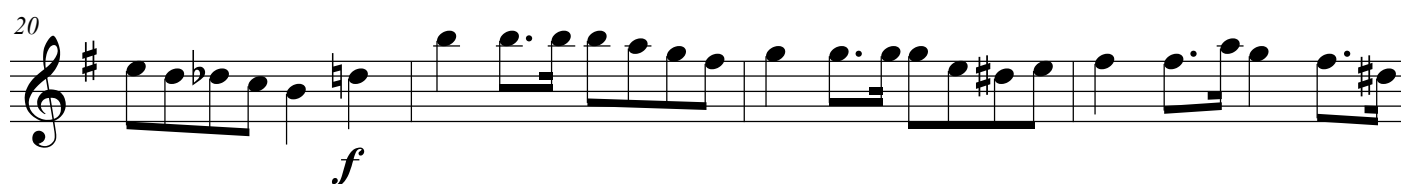
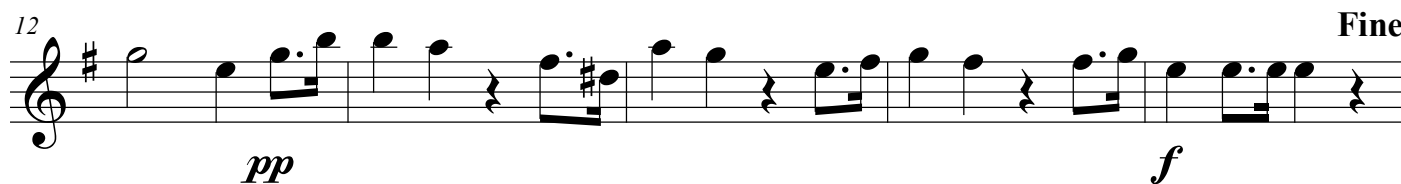
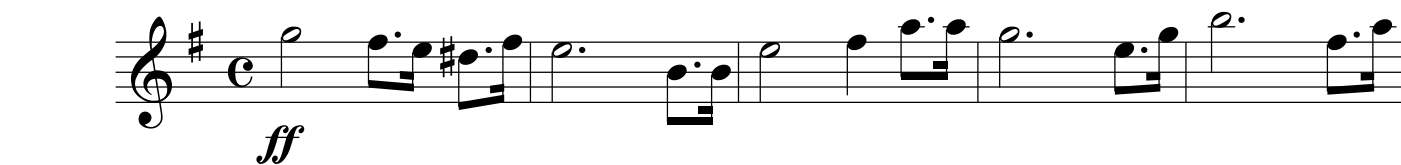
Alto Sax

Senhor dos Passos

Marcha Fúnebre

Pedro de Alchantra Veloso

Lento



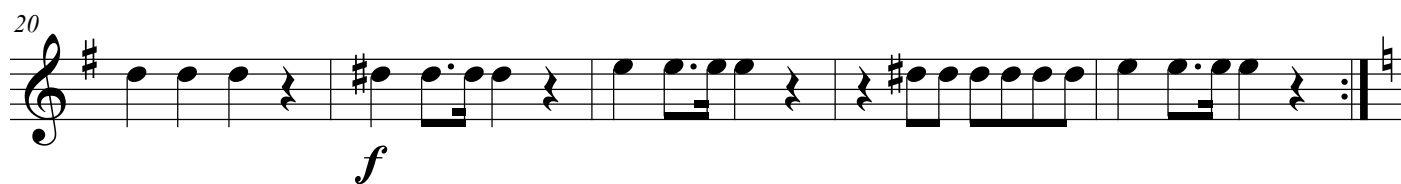
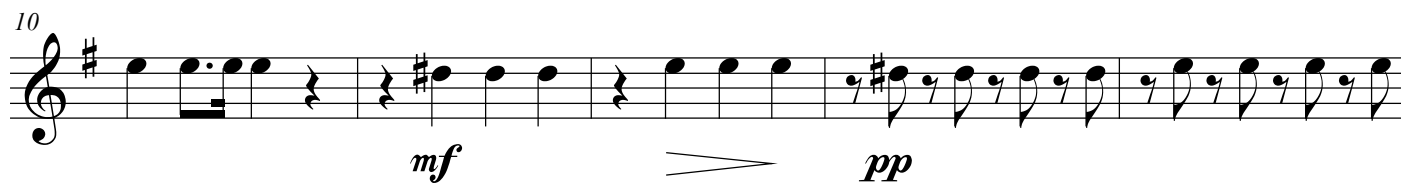
Horn in E \flat 1

Senhor dos Passos

Marcha Fúnebre

Pedro de Alchantra Veloso

Lento



Horn in E \flat 2

Senhor dos Passos

Marcha Fúnebre

Pedro de Alchantra Veloso

Lento

ff

5

10

mf *pp*

15

Fine

f *p*

20

f

25

p *f*

29

D.C. al Fine

Horn in E \flat 3

Senhor dos Passos

Marcha Fúnebre

Pedro de Alchantra Veloso

Lento

5



10

mf *pp*

f

The musical notation shows a single staff with a treble clef and a key signature of one sharp (F#). The melody consists of eighth notes with rests. The first two measures each contain four eighth notes (G4, A4, B4, C5) followed by a quarter rest. The third measure contains a half note G4, a dotted quarter note A4, and a quarter rest. The fourth measure contains a half note B4, a dotted quarter note C5, and a quarter rest. The piece ends with a double bar line and the word "Fine".

17

Measures 17-22 of the piece. Measure 17 starts with a treble clef, a key signature of one sharp (F#), and a repeat sign. The melody consists of quarter notes: G4, A4, B4, and C5. Measure 18 continues with quarter notes: D5, E5, F#5, and G5. Measure 19 has quarter notes: A5, B5, C6, and D6. Measure 20 has quarter notes: E6, F#6, G6, and A6. Measure 21 has quarter notes: B6, C7, D7, and E7. Measure 22 has quarter notes: F#7, G7, A7, and B7. The piece ends with a double bar line. Dynamics *p* and *f* are indicated below measures 17 and 22 respectively.

23

p

27 D.C. al Fine

f

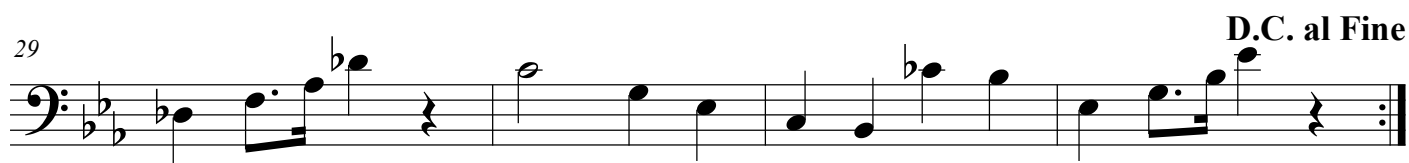
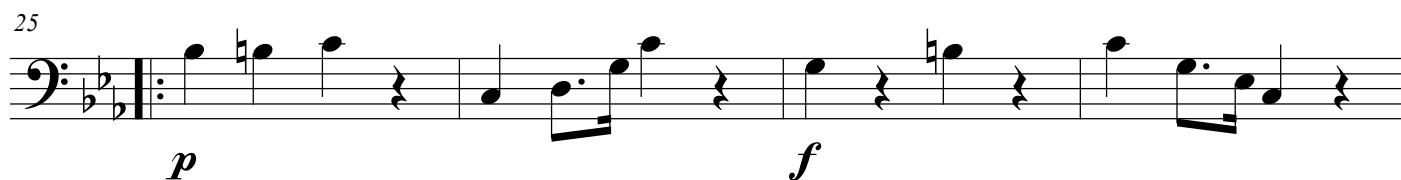
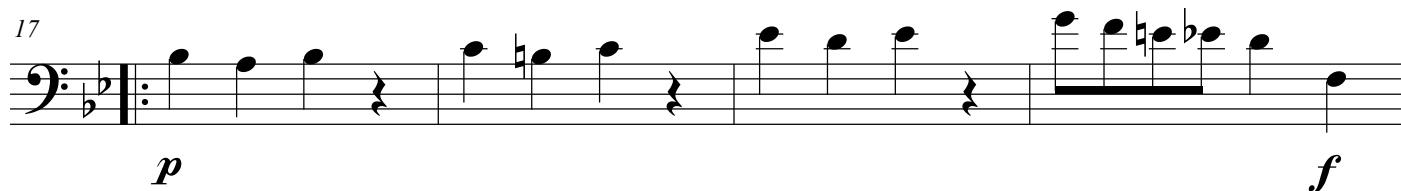
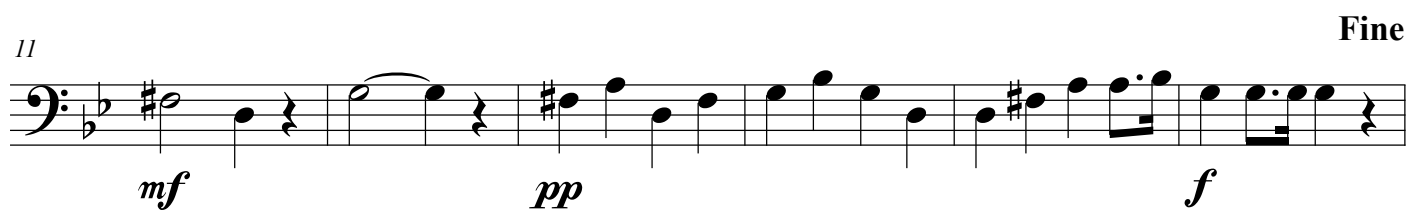
Trombone cantabile

Senhor dos Passos

Marcha Fúnebre

Pedro de Alchantra Veloso

Lento



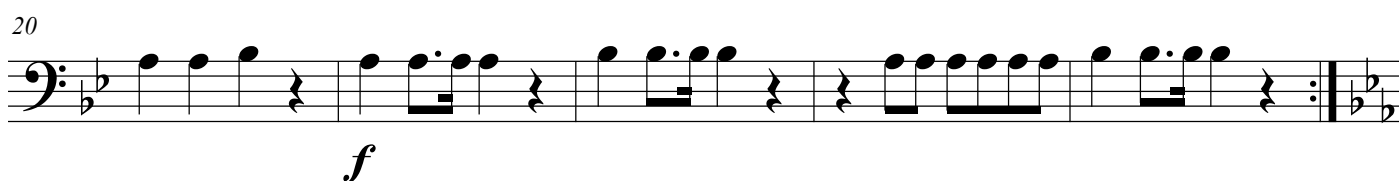
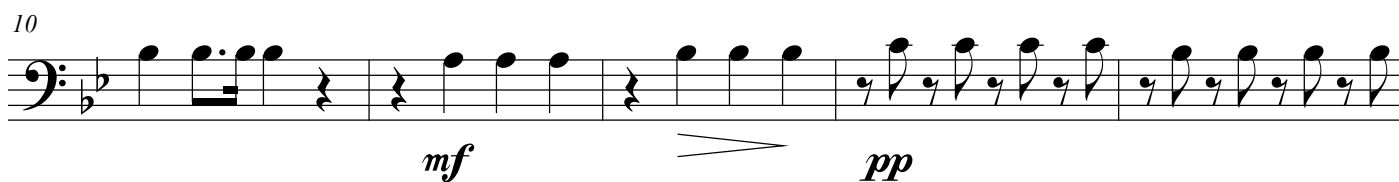
Trombone 1

Senhor dos Passos

Marcha Fúnebre

Pedro de Alchantra Veloso

Lento



Senhor dos Passos

Marcha Fúnebre

Pedro de Alchantra Veloso

Lento



5



10



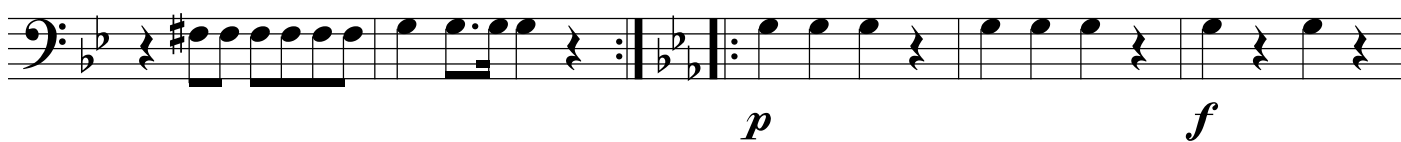
14



17



23



28



Senhor dos Passos

Marcha Fúnebre

Pedro de Alchantra Veloso

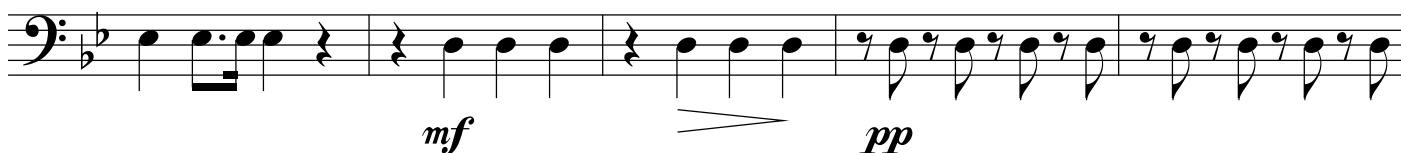
Lento



5



10



15

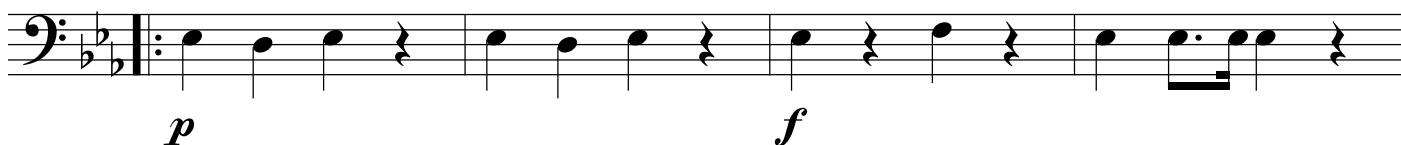
Fine



20



25



29

D.C. al Fine



Senhor dos Passos

Marcha Fúnebre

Pedro de Alchantra Veloso

Lento

ff

5

10 *mf* *pp*

15 *f* *p* Fine

20 *f*

24 *p* *f*

28 *b²* D.C. al Fine

Tuba Mib

Senhor dos Passos

Marcha Fúnebre

Pedro de Alchantra Veloso

Lento

[illegible]

5

Musical notation for the bass line of 'The Rose Tree'. The key signature is one sharp (F#). The melody consists of the following notes: G2, A2, B2, C3, D3, E3, F#3, G3, A3, B3, C4, D4, E4, F#4, G4, A4, B4, C5, D5, E5, F#5, G5, A5, B5, C6, D6, E6, F#6, G6, A6, B6, C7, D7, E7, F#7, G7, A7, B7, C8, D8, E8, F#8, G8, A8, B8, C9, D9, E9, F#9, G9, A9, B9, C10, D10, E10, F#10, G10, A10, B10, C11, D11, E11, F#11, G11, A11, B11, C12, D12, E12, F#12, G12, A12, B12, C13, D13, E13, F#13, G13, A13, B13, C14, D14, E14, F#14, G14, A14, B14, C15, D15, E15, F#15, G15, A15, B15, C16, D16, E16, F#16, G16, A16, B16, C17, D17, E17, F#17, G17, A17, B17, C18, D18, E18, F#18, G18, A18, B18, C19, D19, E19, F#19, G19, A19, B19, C20, D20, E20, F#20, G20, A20, B20, C21, D21, E21, F#21, G21, A21, B21, C22, D22, E22, F#22, G22, A22, B22, C23, D23, E23, F#23, G23, A23, B23, C24, D24, E24, F#24, G24, A24, B24, C25, D25, E25, F#25, G25, A25, B25, C26, D26, E26, F#26, G26, A26, B26, C27, D27, E27, F#27, G27, A27, B27, C28, D28, E28, F#28, G28, A28, B28, C29, D29, E29, F#29, G29, A29, B29, C30, D30, E30, F#30, G30, A30, B30, C31, D31, E31, F#31, G31, A31, B31, C32, D32, E32, F#32, G32, A32, B32, C33, D33, E33, F#33, G33, A33, B33, C34, D34, E34, F#34, G34, A34, B34, C35, D35, E35, F#35, G35, A35, B35, C36, D36, E36, F#36, G36, A36, B36, C37, D37, E37, F#37, G37, A37, B37, C38, D38, E38, F#38, G38, A38, B38, C39, D39, E39, F#39, G39, A39, B39, C40, D40, E40, F#40, G40, A40, B40, C41, D41, E41, F#41, G41, A41, B41, C42, D42, E42, F#42, G42, A42, B42, C43, D43, E43, F#43, G43, A43, B43, C44, D44, E44, F#44, G44, A44, B44, C45, D45, E45, F#45, G45, A45, B45, C46, D46, E46, F#46, G46, A46, B46, C47, D47, E47, F#47, G47, A47, B47, C48, D48, E48, F#48, G48, A48, B48, C49, D49, E49, F#49, G49, A49, B49, C50, D50, E50, F#50, G50, A50, B50, C51, D51, E51, F#51, G51, A51, B51, C52, D52, E52, F#52, G52, A52, B52, C53, D53, E53, F#53, G53, A53, B53, C54, D54, E54, F#54, G54, A54, B54, C55, D55, E55, F#55, G55, A55, B55, C56, D56, E56, F#56, G56, A56, B56, C57, D57, E57, F#57, G57, A57, B57, C58, D58, E58, F#58, G58, A58, B58, C59, D59, E59, F#59, G59, A59, B59, C60, D60, E60, F#60, G60, A60, B60, C61, D61, E61, F#61, G61, A61, B61, C62, D62, E62, F#62, G62, A62, B62, C63, D63, E63, F#63, G63, A63, B63, C64, D64, E64, F#64, G64, A64, B64, C65, D65, E65, F#65, G65, A65, B65, C66, D66, E66, F#66, G66, A66, B66, C67, D67, E67, F#67, G67, A67, B67, C68, D68, E68, F#68, G68, A68, B68, C69, D69, E69, F#69, G69, A69, B69, C70, D70, E70, F#70, G70, A70, B70, C71, D71, E71, F#71, G71, A71, B71, C72, D72, E72, F#72, G72, A72, B72, C73, D73, E73, F#73, G73, A73, B73, C74, D74, E74, F#74, G74, A74, B74, C75, D75, E75, F#75, G75, A75, B75, C76, D76, E76, F#76, G76, A76, B76, C77, D77, E77, F#77, G77, A77, B77, C78, D78, E78, F#78, G78, A78, B78, C79, D79, E79, F#79, G79, A79, B79, C80, D80, E80, F#80, G80, A80, B80, C81, D81, E81, F#81, G81, A81, B81, C82, D82, E82, F#82, G82, A82, B82, C83, D83, E83, F#83, G83, A83, B83, C84, D84, E84, F#84, G84, A84, B84, C85, D85, E85, F#85, G85, A85, B85, C86, D86, E86, F#86, G86, A86, B86, C87, D87, E87, F#87, G87, A87, B87, C88, D88, E88, F#88, G88, A88, B88, C89, D89, E89, F#89, G89, A89, B89, C90, D90, E90, F#90, G90, A90, B90, C91, D91, E91, F#91, G91, A91, B91, C92, D92, E92, F#92, G92, A92, B92, C93, D93, E93, F#93, G93, A93, B93, C94, D94, E94, F#94, G94, A94, B94, C95, D95, E95, F#95, G95, A95, B95, C96, D96, E96, F#96, G96, A96, B96, C97, D97, E97, F#97, G97, A97, B97, C98, D98, E98, F#98, G98, A98, B98, C99, D99, E99, F#99, G99, A99, B99, C100, D100, E100, F#100, G100, A100, B100, C101, D101, E101, F#101, G101, A101, B101, C102, D102, E102, F#102, G102, A102, B102, C103, D103, E103, F#103, G103, A103, B103, C104, D104, E104, F#104, G104, A104, B104, C105, D105, E105, F#105, G105, A105, B105, C106, D106, E106, F#106, G106, A106, B106, C107, D107, E107, F#107, G107, A107, B107, C108, D108, E108, F#108, G108, A108, B108, C109, D109, E109, F#109, G109, A109, B109, C110, D110, E110, F#110, G110, A110, B110, C111, D111, E111, F#111, G111, A111, B111, C112, D112, E112, F#112, G112, A112, B112, C113, D113, E113, F#113, G113, A113, B113, C114, D114, E114, F#114, G114, A114, B114, C115, D115, E115, F#115, G115, A115, B115, C116, D116, E116, F#116, G116, A116, B116, C117, D117, E117, F#117, G117, A117, B117, C118, D118, E118, F#118, G118, A118, B118, C119, D119, E119, F#119, G119, A119, B119, C120, D120, E120, F#120, G120, A120, B120, C121, D121, E121, F#121, G121, A121, B121, C122, D122, E122, F#122, G122, A122, B122, C123, D123, E123, F#123, G123, A123, B123, C124, D124, E124, F#124, G124, A124, B124, C125, D125, E125, F#125, G125, A125, B125, C126, D126, E126, F#126, G126, A126, B126, C127, D127, E127, F#127, G127, A127, B127, C128, D128, E128, F#128, G128, A128, B128, C129, D129, E129, F#129, G129, A129, B129, C130, D130, E130, F#130, G130, A130, B130, C131, D131, E131, F#131, G131, A131, B131, C132, D132, E132, F#132, G132, A132, B132, C133, D133, E133, F#133, G133, A133, B133, C134, D134, E134, F#134, G134, A134, B134, C135, D135, E

10

The bass line is written on a single staff in bass clef with a key signature of one sharp (F#). It consists of 12 measures. The first measure contains a quarter note G2, an eighth note F#2, and a quarter note E2. The second measure contains a quarter note D2, a quarter rest, and a quarter note C2. The third measure contains a quarter note B1, a quarter rest, and a quarter note A1. The fourth measure contains a quarter note G1, a quarter rest, and a quarter note F1. The fifth measure contains a quarter note E1, a quarter rest, and a quarter note D1. The sixth measure contains a quarter note C1, a quarter rest, and a quarter note B0. The seventh measure contains a quarter note A0, a quarter rest, and a quarter note G0. The eighth measure contains a quarter note F0, a quarter rest, and a quarter note E0. The ninth measure contains a quarter note D0, a quarter rest, and a quarter note C0. The tenth measure contains a quarter note B0, a quarter rest, and a quarter note A0. The eleventh measure contains a quarter note G0, a quarter rest, and a quarter note F0. The twelfth measure contains a quarter note E0, a quarter rest, and a quarter note D0. The dynamic markings *mf* and *pp* are placed below the staff at the beginning of the fifth and tenth measures, respectively.

14

[illegible]

18

[illegible]

23

27

[illegible]

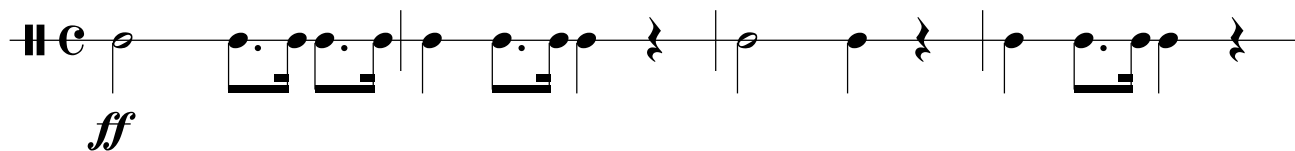
Snare Drum
(Caixa)

Senhor dos Passos

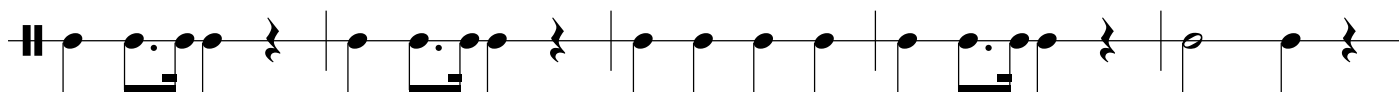
Marcha Fúnebre

Pedro de Alchantra Veloso

Lento

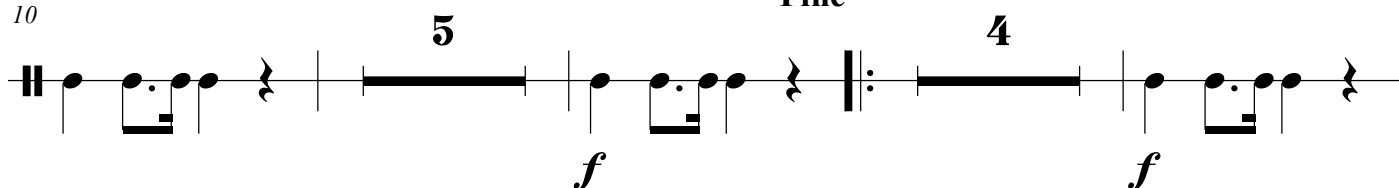


5

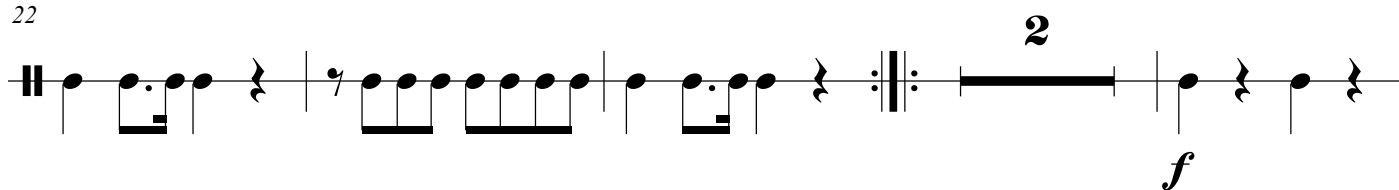


10

Fine

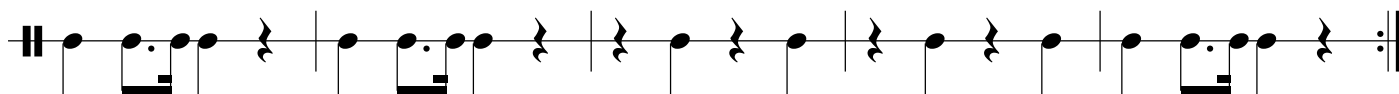


22



28

D.C. al Fine



Bass Drum
Bombo

Senhor dos Passos

Marcha Fúnebre

Pedro de Alchantra Veloso

Lento

