

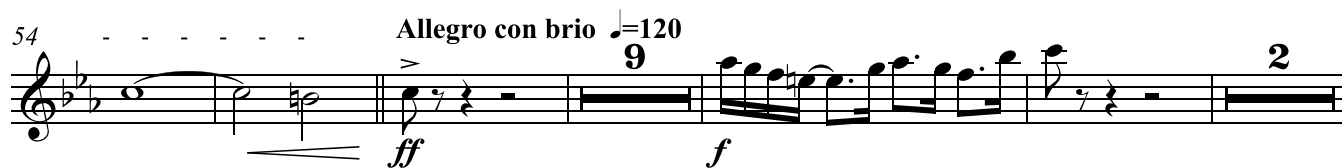
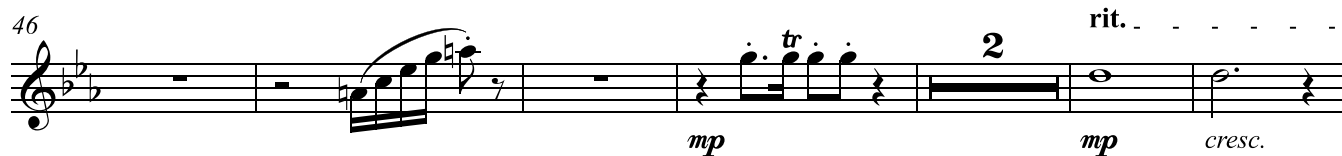
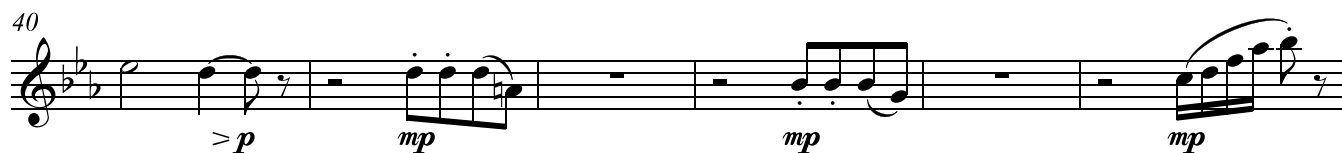
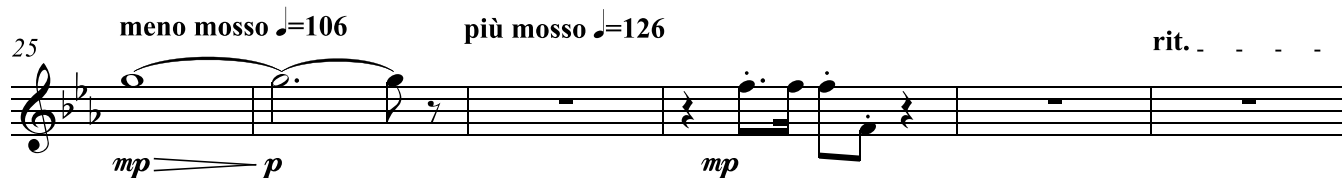
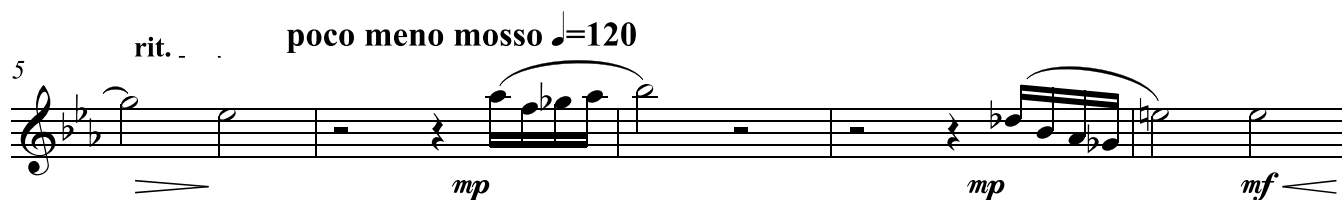
Oboe 1

Capriccio Humoresque

for Pianoforte & Orchestra

Daniel Léo Simpson
Palo Alto, California
Spring 1996

Allegro ♩=126



70 poco rit. . . poco meno mosso ♩=120 tempo giusto ♩=126

80 poco rit. .

85 a tempo ♩=126

92

98

102 poco rit.

106 meno mosso ♩=108 accel. . . . a tempo ♩=126

114 rit. meno mosso ♩=108

121

126

131

136 *rit.* *meno mosso* ♩=83 *accel.*

mf *mp*

144 *più mosso* ♩=104 *accel.*

mp *f*

150 *Allegro con brio* ♩=120

ff *f*

160 *f*

164

167 *f* *ff* *f* *3*

poco accel. *tr* *tempo giusto* ♩=126

174 *mf* *cresc.* *f* *ff* *3*

182 *mf* *3*

185 *mf*

188 *mf*

193

f *f*

200

ff *f*

206

mp *mf* *mp*

210

cresc.

213

ff *mp* *ff*

poco rit.

Detailed description of the musical score: The score is for Oboe 1, measures 193 to 213. The key signature has one sharp (F#), and the time signature is 4/4. Measure 193 starts with a half rest, followed by quarter notes G4, A4, B4, and A4, with a forte (f) dynamic. Measure 194 has a half rest, followed by quarter notes G4, A4, B4, and A4, with a forte (f) dynamic. Measure 195 has a half rest, followed by quarter notes G4, A4, B4, and A4, with a forte (f) dynamic. Measure 196 has a half rest, followed by quarter notes G4, A4, B4, and A4, with a forte (f) dynamic. Measure 197 has a half rest, followed by quarter notes G4, A4, B4, and A4, with a forte (f) dynamic. Measure 198 has a half rest, followed by quarter notes G4, A4, B4, and A4, with a forte (f) dynamic. Measure 199 has a half rest, followed by quarter notes G4, A4, B4, and A4, with a forte (f) dynamic. Measure 200 has a half rest, followed by quarter notes G4, A4, B4, and A4, with a fortissimo (ff) dynamic. Measure 201 has a half rest, followed by quarter notes G4, A4, B4, and A4, with a forte (f) dynamic. Measure 202 has a half rest, followed by quarter notes G4, A4, B4, and A4, with a forte (f) dynamic. Measure 203 has a half rest, followed by quarter notes G4, A4, B4, and A4, with a forte (f) dynamic. Measure 204 has a half rest, followed by quarter notes G4, A4, B4, and A4, with a forte (f) dynamic. Measure 205 has a half rest, followed by quarter notes G4, A4, B4, and A4, with a forte (f) dynamic. Measure 206 has a half rest, followed by quarter notes G4, A4, B4, and A4, with a mezzo-forte (mf) dynamic. Measure 207 has a half rest, followed by quarter notes G4, A4, B4, and A4, with a mezzo-forte (mf) dynamic. Measure 208 has a half rest, followed by quarter notes G4, A4, B4, and A4, with a mezzo-forte (mf) dynamic. Measure 209 has a half rest, followed by quarter notes G4, A4, B4, and A4, with a mezzo-forte (mf) dynamic. Measure 210 has a half rest, followed by quarter notes G4, A4, B4, and A4, with a mezzo-forte (mf) dynamic. Measure 211 has a half rest, followed by quarter notes G4, A4, B4, and A4, with a mezzo-forte (mf) dynamic. Measure 212 has a half rest, followed by quarter notes G4, A4, B4, and A4, with a mezzo-forte (mf) dynamic. Measure 213 has a half rest, followed by quarter notes G4, A4, B4, and A4, with a fortissimo (ff) dynamic. The score includes various dynamics (f, ff, mp, mf, cresc., poco rit.) and articulations (accents, slurs, hairpins). Measure 213 includes a sixteenth-note triplet marked with a '6'.

Oboe 2

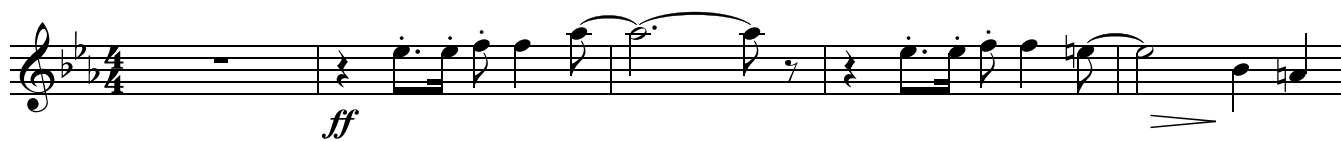
Capriccio Humoresque

for Pianoforte & Orchestra

Daniel Léo Simpson
Palo Alto, California
Spring 1996

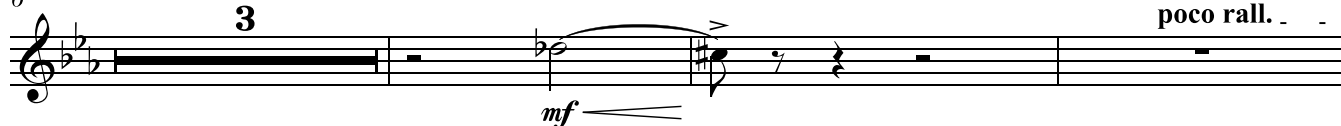
Allegro ♩=126

rit.



6 poco meno mosso ♩=120

poco rall.



12 meno mosso ♩=112

accel.

poco più mosso ♩=120



Tempo primo ♩=126

rit.



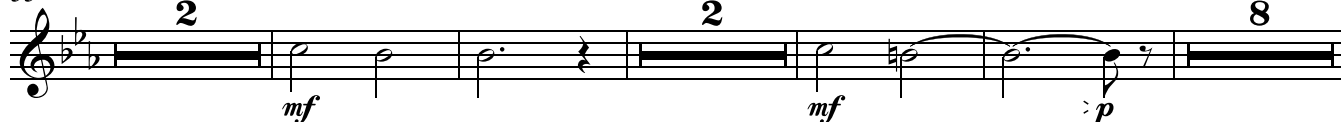
meno mosso ♩=106

più mosso ♩=126

rit.



33 meno mosso



49

rit.



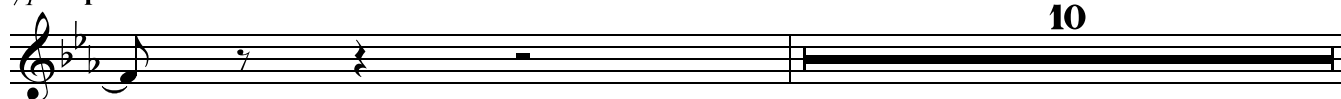
56 Allegro con brio ♩=120

poco rit.



71 poco meno mosso ♩=120

10



82 **tempo giusto** ♩=126 **poco rit. . a tempo** ♩=126

89 **mf** **2** **mf** **3** **3** **3** **3** **f**

95 **6** **mf** **ff** **poco rit. .**

106 **meno mosso** ♩=108 **3** **f** **f** **ff**

114 **2** **f** **rit.** **meno mosso** ♩=108 **6** **mf** **6**

131 **mp** **mf**

135 **2** **mf** **rit.**

140 **meno mosso** ♩=83 **accel. più mosso** ♩=104 **accel.** **mf** **f**

150 **Allegro con brio** ♩=120 **12** **f**

165

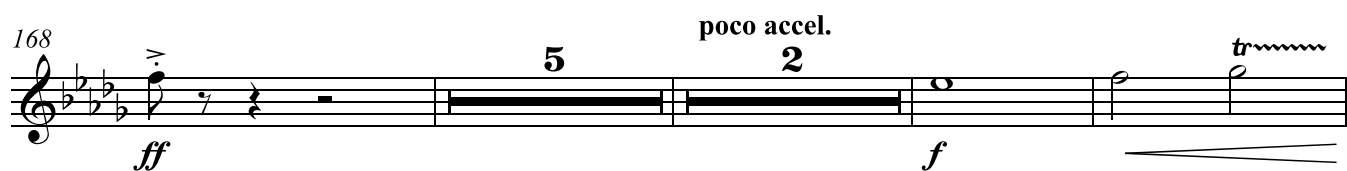


f

168

poco accel.

5 2



ff *f*

178

tempo giusto ♩=126

8



ff *mf* *mf*

191

2



f *f*

200



ff *f*

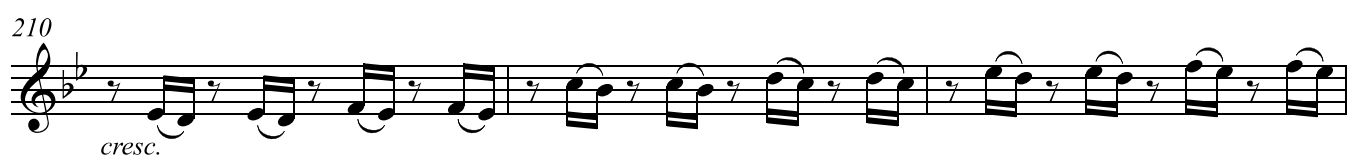
206



mp *mf* *mp*

210

cresc.



cresc.

213

poco rit. . . .

6



ff *mp* *ff*